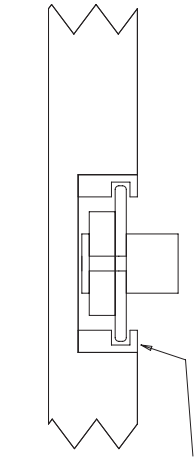
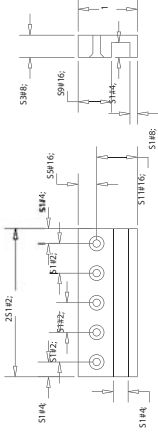


Encoder Mounts Plan
View
Front

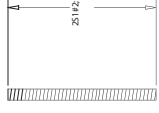


(Qty. 8) Encoder
Plate Bracket
See Detail 1

Detail 1 Encoder Plate
Bracket (Qty=8)

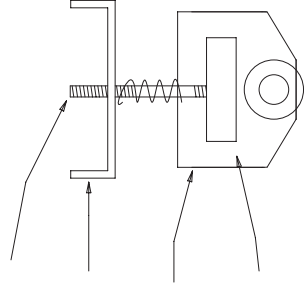


Detail 2 Thread Rod
(Qty=4)



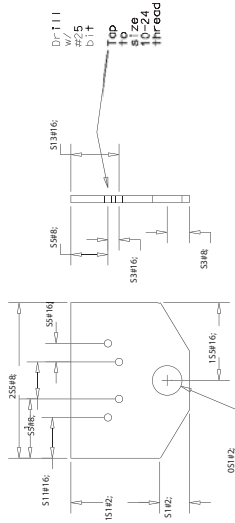
(Qty. 4) Thread
Rod
Detail 2

Top



(Qty. 4) Spring
Bracket
Detail 5

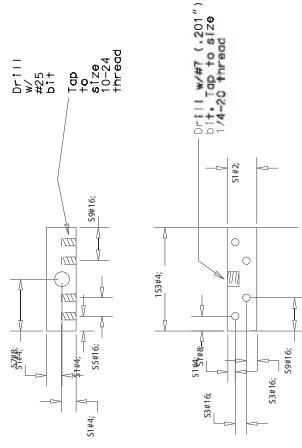
Detail 3 Encoder Plate
(Qty=4)



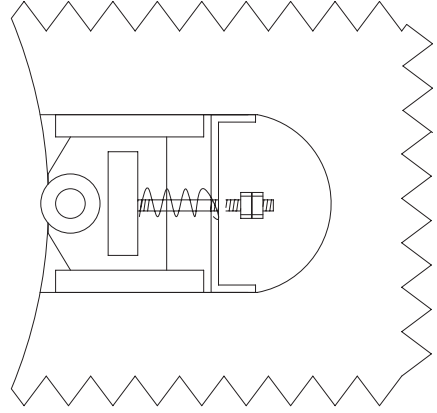
(Qty. 4) Encoder
Plate
Detail 3

(Qty. 4) Spring
Bracket
Detail 4

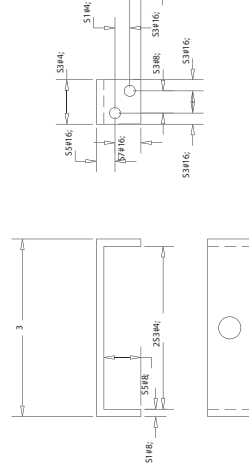
Detail 4 Spring
Block (Qty=4)



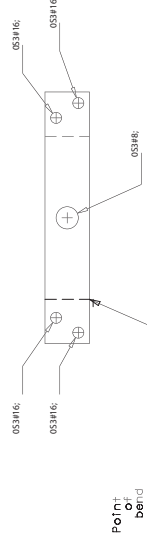
Top Cutaway



Detail 5-A Spring Bracket
(Bent) (Qty=4)



Detail 5-B Spring Bracket
(Unbent) (Qty=4)



Point
of
bend